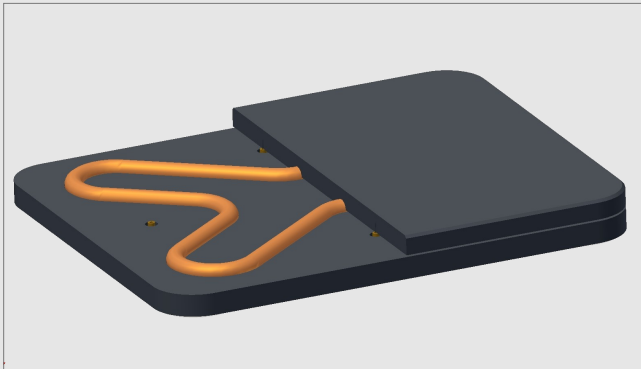


## LEVI-BASE



The THALES LEVI BASE has been developed to provide perfect conditions for all kind of audio-gear which is sensible to vibrations (f. e. turntable, tube-amplifier). The challenge by doing so is to keep oscillations from outside away while guiding vibrations caused by the equipment itself away without enforcing them. We have improved a simple idea - bearing the gear on a pneumatic rubber-tube - to eliminate all disadvantage of such a principle as non-defined position and geometry, resonance, loss of air.

By guiding the air-tube inside a well defined channel, the free moving space is limited to ca. 1mm in all directions. This guiding groove at the same time enables the extra-thin air-tube to require much less pressure to provide highly effective decoupling properties (up to - 15dB).

*Size: 480 x 430 x 50mm*

*Color: Black (others on request)*

## Cables



The experience in winding finest internal wirings of purest copper for our tonearms made us following this philosophy for phono-, line- and speaker-cables. They are available in different length with free choice for input and output-plugs. Each conductor is made of several ultra-thin copper wires, pairwise twisted and casted into nylon. The cable is mechanically flexible to keep away airborne vibrations from the gear.

### ThalesPhono

*Input: RCA, XLR, 5-pin-DIN*

*Output: RCA, XLR*

*Length: 1m - 3m*

### ThalesLine

*Input: RCA, XLR*

*Output: RCA, XLR*

*Length: 1m - 3m*

### ThalesSpeaker

*Input: Banana / Spades*

*Output: Banana / Spades*

*Length: 2m - 4m*